

KANEKA Surfactin

Biosurfactant made by fermentation technology of KANEKA

- High performance (CMC:0.0003%) -
> 3000 times more effective than lecithin
- Low irritation and easy biodegradation -
> Human and environmental friendly



**COSMOS
APPROVED**

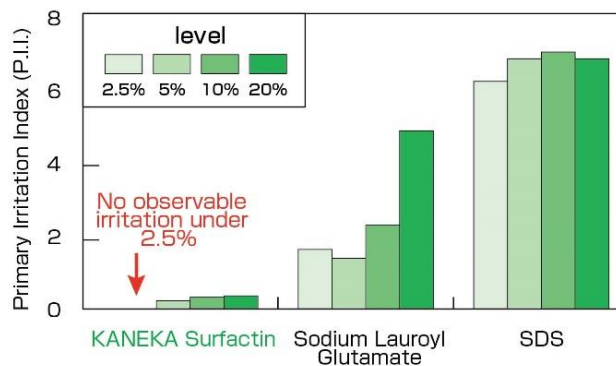
Comparison of Surfactants

KANEKA Surfactin (White powder)

Surfactants	Performance	
	Critical Micelle Concentration (CMC) [%]	Vs. SF
KANEKA Surfactin	0.0003	1
Lecithin(Natural Prod.)	1	1/3000
SDS(Synthetic Prod.)	0.1	1/300

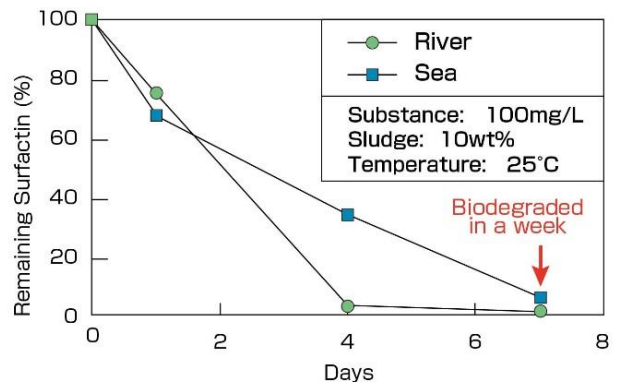


Primary skin irritation test



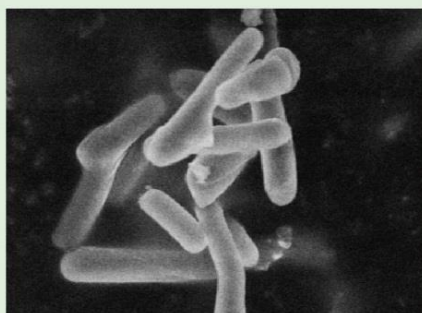
Biodegradation test

(MITI test : easily biodegradable)

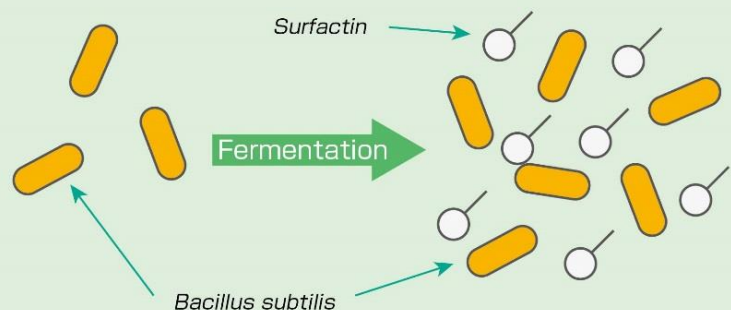


Surfactin is produced by natural fermentation.

- Found in the culture broth of *Bacillus subtilis* in 1968
- Sustainable products by fermentation under mild condition



Bacillus subtilis

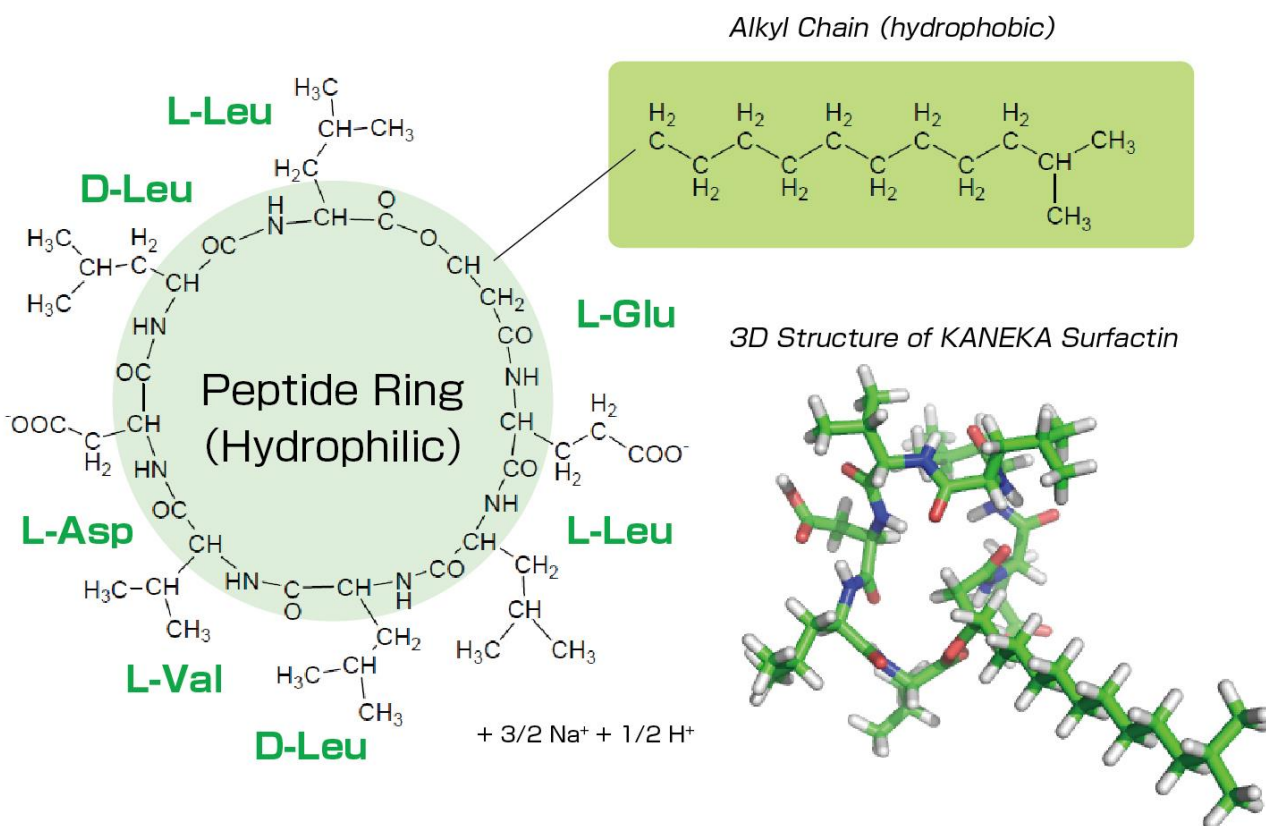


<Data>

Name	KANEKA Surfactin
INCI name	Sodium Surfactin
CAS No.	302933-83-1
Appearance	white powder
Stability	stable: heat treatment; acidic to weak alkaline conditions not stable: strong alkaline conditions (pH > 10)
Solubility	soluble in aqueous solvents. precipitation at acidic pH or with alkaline earth metal ions (Mg ²⁺ , Ca ²⁺).
pH	pH 6.5-8.0
Use	a cosmetic ingredient worldwide since 2001
Regulation	Registration complete in Japan, Europe, United States and China

<Chemical Structure>

KANEKA Surfactin has a unique structure including a hydrophilic cyclic peptide part constructed by seven amino acids and a hydrophobic hydrocarbon chain.



KANEKA

The Dreamology Company

— Make your dreams happen —

Contact Information

Address: Kaneka Corporation, New Business Development Division
2-3-18, Nakanoshima, Kita-ku, Osaka, 530-8288, Japan
E-Mail: surfactin@kn.kaneka.co.jp

★ The data is based on limited test conditions and not guaranteed