

KANEKA Surfactin

Biosurfactant made by fermentation technology of KANEKA

- High performance (CMC:0.0003%) -> 3000 times more effective than lecithin
- Low irritation and easy biodegradation -> Human and environmental friendly

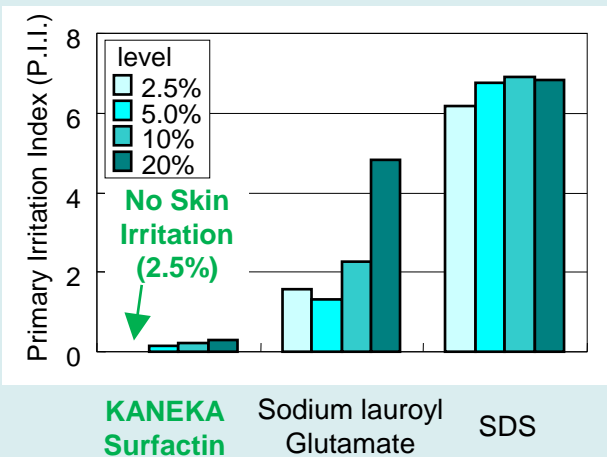
Table 1. Comparison of Surfactants

Surfactants	Performance	
	Critical Micelle Concentration (CMC) [%]	Vs. SF
KANEKA Surfactin	0.0003	1
Lecithin (Natural Prod.)	1	1/3000
SDS (Synthetic Prod.)	0.1	1/300



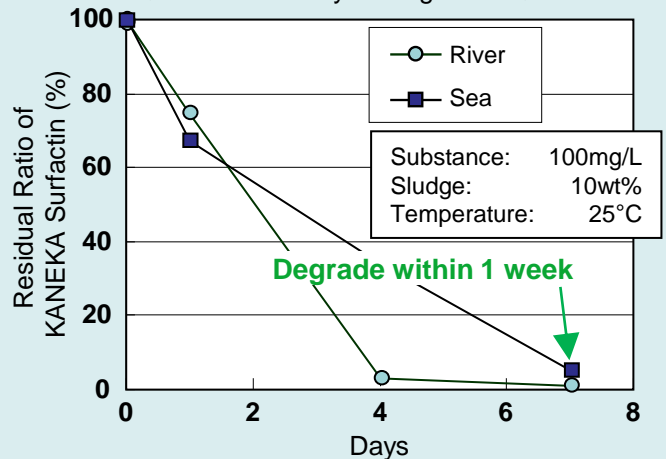
KANEKA Surfactin (White powder)

Primary skin irritation test



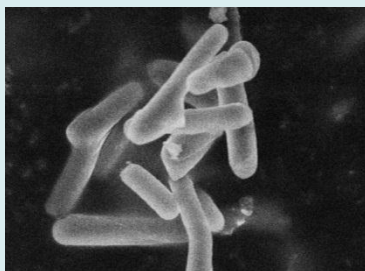
Biodegradation test

(MITI test : easily biodegradable)

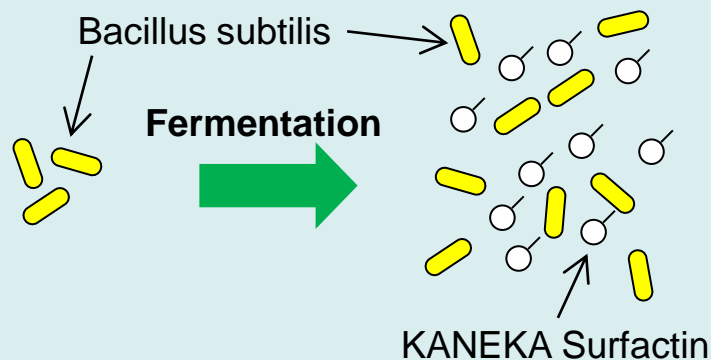


Surfactin is produced by natural fermentation.

- Found in the culture broth of *Bacillus subtilis* in 1968
- Sustainable products by fermentation under mild condition



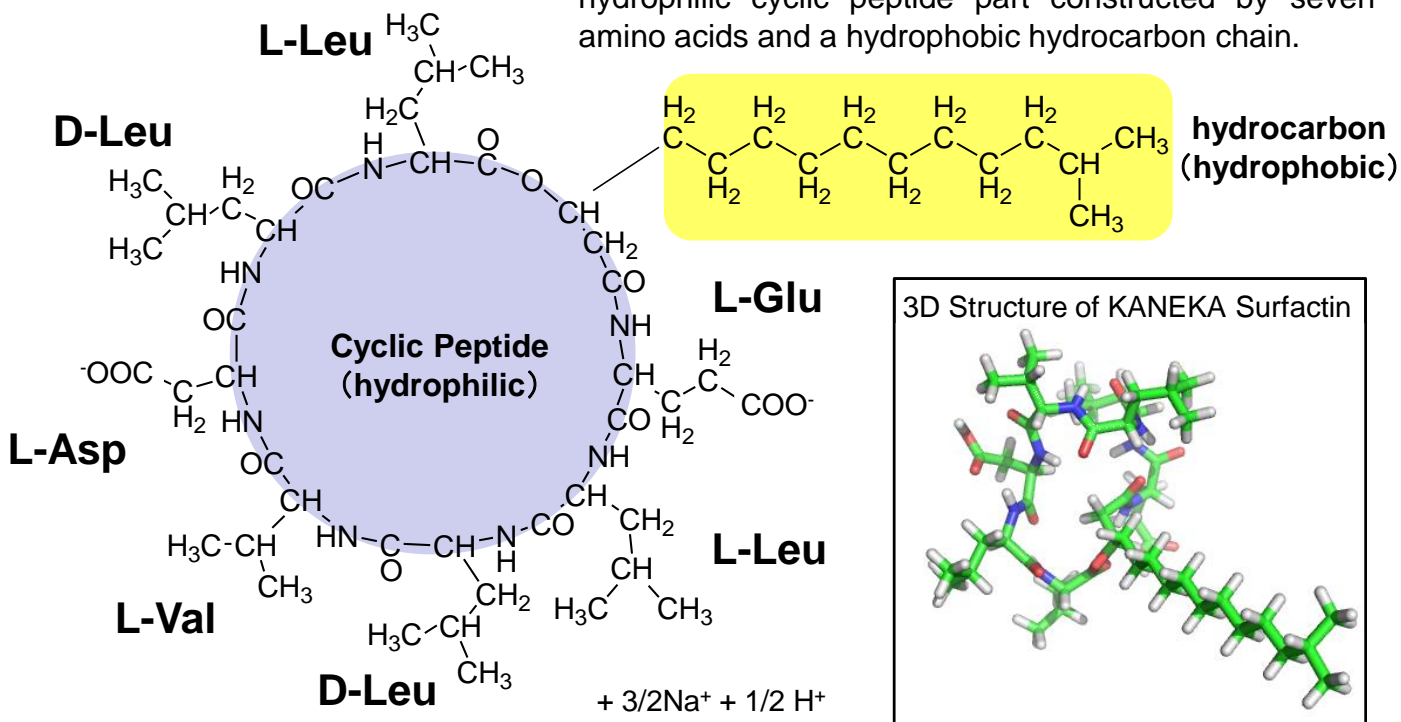
Bacillus subtilis



<Data>

Name	KANEKA Surfactin
INCI name:	Sodium Surfactin
CAS No.:	302933-83-1
Appearance:	white powder
Stability:	stable: heat treatment; acidic to weak alkaline conditions not stable: strong alkaline conditions (pH > 10)
Solubility:	soluble in aqueous solvents. precipitation at acidic pH or with alkaline earth metal ions (Mg ²⁺ , Ca ²⁺).
pH:	pH 6.5-8.0
Use	a cosmetic ingredient worldwide since 2001

<Structure>



The data is based on limited test conditions and not guaranteed.

KANEKA
KANEKA CORPORATION

<Contact Information>

Kaneka Corporation, New Business Development Division
〒530-8288, 2-3-18, Nakanoshima, Kita-ku, Osaka, Japan
E-Mail: surfactin@kn.kaneka.co.jp